

Hidalgo County Metropolitan Planning Organization

2030 Long Range Metropolitan Transportation Plan (MTP)

The Hidalgo County MPO is currently working on the Long Range Metropolitan Transportation Plan (MTP). The MTP is a comprehensive blueprint for transportation systems and services aimed at meeting the mobility needs of the McAllen Metropolitan Area. The plan also serves as a statement of how the region plans to invest in the county's transportation system over the next 25 years. The MTP includes both long and short-range policies, strategies, and projects that lead to the development of an integrated system that will efficiently move people and goods. The docu-

ment is required to be financially-constrained, and able to identify and analyze the financial resources available to implement its recommendations. The MTP guides the expenditure of more than \$1 Billion of federal, state and local funds expected to be available for transportation improvements in Hidalgo County through the year 2030. One of the characteristics of the transportation planning process is that it is a continuous activity. Thus, the 2030 MTP builds on prior plans that have been developed by the MPO. The most recent plan was the 2025 MTP and the 2030 MTP uses elements from

the 2025 MTP. The planning process recognizes that the world changes very quickly and that the conditions that were valid in the development of the 2025 MTP may not be so today. **HCMPPO will be having public meetings to receive comment from the public** about the MTP and review short & long range transportation plans for the next 25 years in Hidalgo County as defined in the MTP. We encourage all citizens to attend the meetings and let your opinions be heard. A schedule of the upcoming meetings is included in this newsletter in the **Upcoming Events** section. For more information about the MTP meetings, please contact the MPO office at 618-0803.

Selected Category 2 Transportation Projects in MTP

US 281-From SH 107 to Trenton Rd.

US 83- From Bentsen Palm Dr. E. to Bus 83

US 281-From Trenton Rd. S to SH 495

US 83- From FM 492 to Bentsen Palm Dr.

US 83- From FM 1015 E to FM 1425

US 83- From W. of Showers Rd. to FM 492

US 83- From E. of FM 1425 to Cameron CL

SH 495-At US 83 Overpass

US 83- From Hidalgo CL to W. of Rabb Rd.

FM 1925- From Depot Rd. to FM 2061

US 281-From SH 107 to Business 281

FM 1925- From FM 2220 to Depot Rd.

FM 2061- From S. of Ridge Rd. to FM 3072

FM 2220- From FM 1924 to Mile 5 N.

MPO Planning Partners:

- > Alamo, Alton, Donna, Edcouch, Edinburg, Elsa, Granjeno, Hidalgo, Hidalgo County, LaJoya, LaVilla, McAllen, Mercedes, Mission, Palmhurst, Palmview, Penitas, Pharr, Progreso, Progreso Lakes, San Juan, Sullivan City, Weslaco, FHWA, FTA, LRGVDC-Transit, TxDOT

Inside this issue:

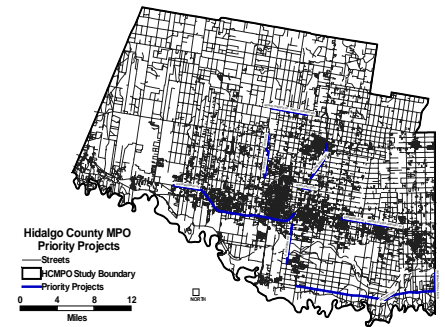
Selected MTP Projects	2
From the Director	2
Upcoming Events	2
What's new at HCMPPO?	3
Committee Spotlight	3
What is the MPD?	4

Selected Category 2 Transportation Projects (Continued)

FM 2220– From Mile 5 N to SH 107 **US 281**–From US 281/SP 600 E to FM 907

US 281–Bus 1015 to .5 Mi E of FM 1015 **US 281**–From FM 493 to Bus 1015

US 281–From FM 907 to FM 493



From the Director



Andrew A. Canon,
HCMPO Director

Fellow Hidalgo County Citizens,

It is an honor and privilege for me to come to you again in the second edition of our newly revised, Hidalgo County MPO (HCMPO) newsletter. As we are all aware, the Hidalgo County area

that since 2002, the maintenance cost of our existing system surpassed the cost of creation of new roadways. In 2002, no gas sales tax in the state went for the creation of new roadways and for this reason, is why it is important that we seek out new ways to fund our much needed roadway system.

Finally let me invite all of you to become involved in our Metropolitan Transportation Plan (MTP). The HCMPO has sent out approximately 60,000 flyers home with grade school students within Hidalgo County announcing our 9 upcoming public meetings. To compliment this effort, the HCMPO has also advertised

the meetings in our local movie theaters as well as on Transit Routes, Libraries and local Government offices. It is important that all citizens of Hidalgo County join us in our meetings and have their voice and concerns heard.

The HCMPO will remain to be consistent in its plans to provide for the safe and efficient movement of people and goods for the citizens of Hidalgo County.

is experiencing vast growth. The Census Bureau predicts that Hidalgo County will experience an approximate 76% population growth within the next 25 years. With this type of growth ahead of us, we need to explore new options for paying for the roadway system we all use. House Bill 3588, which passed in 2003, allowed for the creation of new ways to raise funds for the creation of the much needed new projects. One new way that is being discussed in Hidalgo is Toll Roads. Toll Roads will afford the citizens of Hidalgo County accelerated projects that are much needed. It is important to note

"It is important that all citizens of Hidalgo County join us in our meetings and have their voice and concerns heard."

Upcoming Events

November 2004

- 1- MTP Public Meeting at San Juan Firestation No. 2 5:30 p.m. -7:30 p.m.
 - 3-MTP Public Meeting UTPA 9:00- 11:00a.m.
 - 9-MTP Public Meeting Mission City Hall 5:30p.m.
 - 17-MTP Public Meeting Elsa City Hall 9:00a.m.
 - 30-MTP Public Meeting Weslaco City Hall 5:30p.m.
- Call MPD office for this month's TAC meeting date**

December 2004

- 6-MTP Public Meeting at McAllen City Hall 5:30 p.m. –7:30 p.m.
- 14-TAC Meeting at TxDOT office in Pharr 1:30 p.m.
- 15-**HCMPO MTP Open House** 8:00 a.m.-5:00 p.m.
- 16-Policy Meeting at TxDOT office in Pharr 5:30p.m.
- 24-Christmas Eve (MPD office closed)
- 27-Christmas Holiday (MPD office closed)

January 2005

- 3-New Years Holiday (MPD office closed)
- 11-TAC Meeting at TxDOT office in Pharr 1:30p.m.
- 17-Martin Luther King Holiday (MPD office closed)
- 27-Policy Meeting at TxDOT office in Pharr 5:30 p.m.

What's new at HCMPO?

HCMPO Staff

Andrew A. Canon, MPO Director
Mary Escalona, Administrative Asst
Edward Molitor, Planner II
Sri Matta, Planner II
Lindsey Nunez, Planner I
Maria Champine, GIS Specialist
Srilatha Raavi, GIS Specialist

The MPO would like to to thank all MPO contributing to the welcome our newest staff sub-committees for their progress each committee member, Srilatha Raavi. attendance and extraordi- has made thus far. The Srilatha is a GIS Special- nary participation. We MPO would not have ist and comes to us from appreciate the time you been able to accomplish The University of Toledo, have committed to make as much as we have Ohio. We would also like all MPO meetings such a without everyone's help. success and for Thanks again!

Committee Member Spotlight

Diana Martinez, city community organiza- promoting economic commissioner of the tions which include development in the Alamo City of Alamo, is being elected as the community. These currently a member of first president of the include several businesses the Hidalgo County PSJA Memorial such as Wal-Mart, Metropolitan Planning Wolverine Quarterback Subway, Motel 6, a Organization (MPO) Club, a member of kidney dialysis center and Policy Board. Commis- of AVANCE, Jury in the construction of sioner Martinez has Service Committee, new city hall and library. served the community Women's Political She proudly serves the as an elected official for Caucus and the Alamo community in an effort to the past five years. She Chamber. Commis- improve the future has been electively sioner Martinez has economic growth of the involved in various been very influential in Rio Grande Valley.



Commissioner Diana Martinez, City of Alamo

Committee Member Spotlight

Mr. Toothaker, married to General Business. Follow- Commerce, Board of Kathryn H. Toothaker, ing graduation from the Directors and Trustee of has served the City of University, he started a long the McAllen International Palmhurst as the City banking career with Museum. Gary has also Manager since January McAllen State Bank, been a member of St. 2000. Previous service to followed by thirty years of Mark United Methodist the city includes serving other executive positions in Church in McAllen for as Alderman from 1980- the banking industry. He more than forty years. The 1999 and during that time has been very active in city of Palmhurst has de- also serving several terms community affairs and veloped since 2000 from a as Mayor Pro-Tem and holds memberships in nu- city with no staff or per- City Secretary. Gary W. merous organizations which manent office to the fastest Toothaker was born in include the Mission Rotary growing city (statistically Mercedes, Texas and has Club, McAllen Jaycee's, in the state of Texas. Rela- lived in Palmhurst since Hidalgo County Sheriff's tionships and involvement 1970. He attended the Posse, McAllen Citizens with various entities such University of Texas at League, McAllen Airport as the HCMPO, Hidalgo Austin and graduated Advisory Committee, County Urban County Pro- from the University of McAllen Chamber of Com- gram, TML, the cities of Texas - Pan American in merce, Greeter's Commit- McAllen and Mission, and 1967, with a B.B.A. in tee, Mission Chamber of many others have assisted



Gary W. Toothaker, Palmhurst City Manager

in Palmhurst's growth. Many city projects are being developed in conjunction with a fine mayor and Board of Aldermen/Alderwomen, a wonderful staff, working Planning and Zoning Commission, Crime Control and Prevention District Temporary Board of Directors of the proposed Palmhurst Law Enforcement District and a great many fine citizens.



Hidalgo County Metropolitan Planning Organization
1801 South 2nd Street, 4th Floor, Suite 430
McAllen, Texas 78503

Phone: (956) 618-0803
Fax: (956) 618-5340
www.lrgvdc.org

If you wish to be added to our mailing list, please contact the MPO office or Lindsey Nuñez at lnunez@lrgvdc.org

HCMPO also offers a Spanish edition of this newsletter!

What is the MPO and how does it affect me?

Do you wish that you could talk to your officials about transportation problems before the construction begins? The HCMPO provides numerous opportunities for you to be heard! Whether you are a member of the MPO or a private citizen, you have a role to play with the MPO.

What is the MPO? The HCMPO is a federally funded program that works with the cities of Hidalgo County, as well as the Texas Department of Transportation, to plan for the future transportation needs of Hidalgo County. Every metropolitan area with a population of 50,000 or more must have a designated Metropolitan Planning Organization (MPO). HCMPO has served as the MPO for the McAllen

Metropolitan Area since 1993 and is composed of a Technical Advisory Committee (TAC) and a Policy Committee. The TAC committee's membership consists of *local officials and planners* from the MPO planning partner cities and Hidalgo County. This committee is responsible for making technical planning recommendations to the Policy Committee for immediate action. The MPO Policy Committee consists of *elected officials* from each city and Hidalgo County and was created for the purpose of serving as spokespersons for the citizens of the county and cities in the metropolitan area. The Policy Committee is responsible for policy making in transportation planning issues.

An updated list of the technical and policy committee members can be obtained from the MPO office.

MPO committee members are ultimately responsible to the residents of the region for the quality of transportation services and for the impact of transportation on their overall quality of life. This means the committee members share the responsibility for making sure that major transportation issues of today and tomorrow are dealt with fairly and properly. **Citizens are encouraged to participate in the transportation planning process** during the monthly meetings of the Technical and Policy Committees. A schedule of upcoming meetings is included on page 2 of this newsletter. Contact the MPO office for more information or to learn more about meeting locations.

